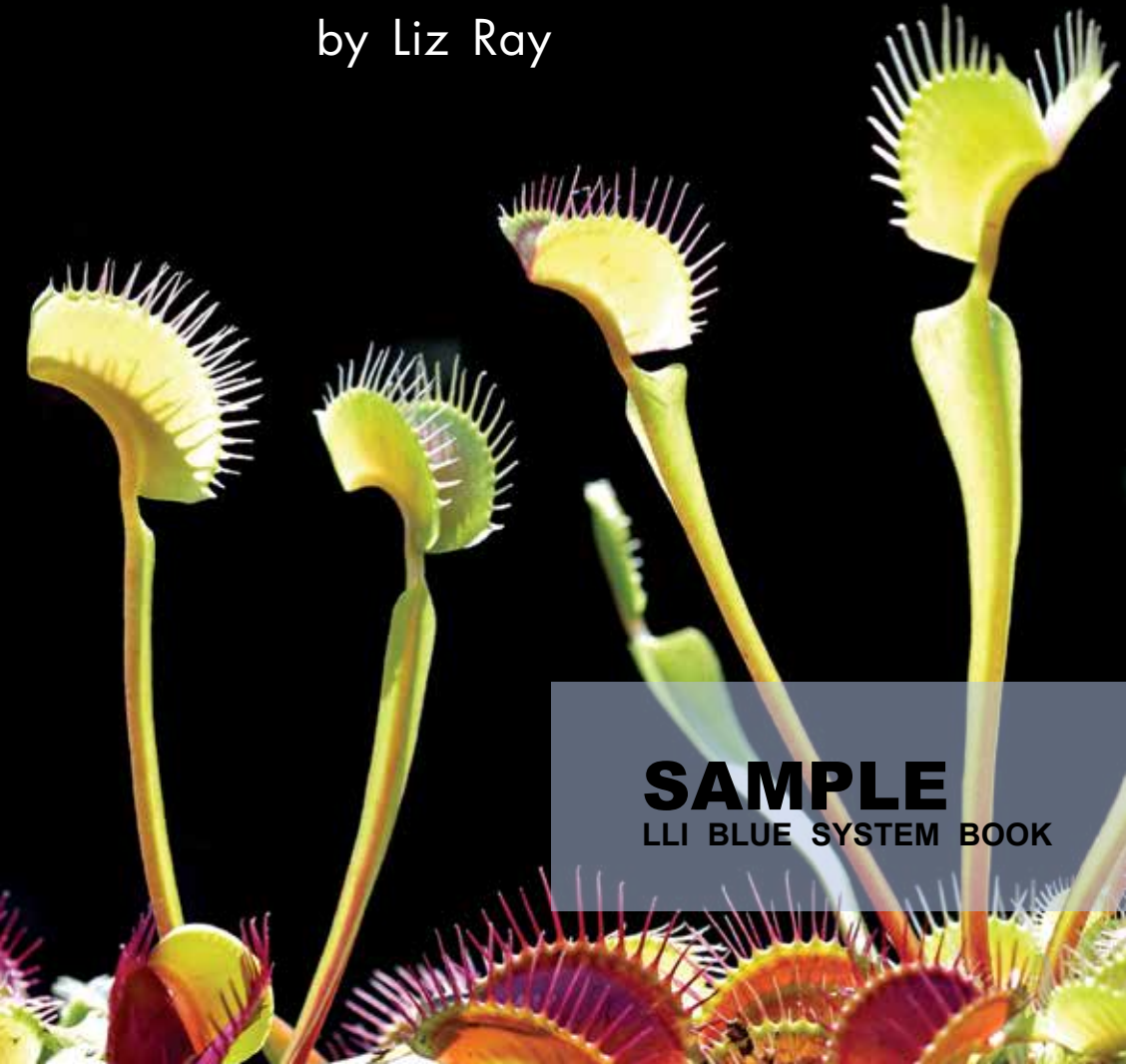


# Plants That Eat Bugs

by Liz Ray



**SAMPLE**

LLI BLUE SYSTEM BOOK

## **Plants That Eat Bugs**

Author: Liz Ray

### **Heinemann**

361 Hanover Street  
Portsmouth, NH 03801–3912  
www.heinemann.com

*Offices and agents throughout the world*

Fountas and Pinnell Leveled Literacy Intervention Books

Copyright © 2009 by Irene C. Fountas, Gay Su Pinnell, and Heinemann

All rights reserved. No portion of this book may be reproduced in any form or by any electronic or mechanical means, including information storage and retrieval systems, without permission in writing from the publisher. Requests for permission should be mailed to the Permissions Department at Heinemann, 361 Hanover Street, Portsmouth, NH 03801.

ISBN-13: 978-0-325-01656-6

ISBN-10: 0-325-01656-9

Editorial Development, Design, and Production by Brown Publishing Network

### **Credits**

Photographs: cover © Roger Bamber/Alamy; back cover, pp. 7, 16 (top) © blickwinkel/Alamy; pp. 1, 5 © Gary Rhijnsburger/Masterfile; p. 2 © David M. Dennis/Animals Animals; p. 3 (top left) © Ryan McVay/Getty Images; p. 3 (top right) © A.Sarti/Peter Arnold; p. 3 (bottom), p. 13 © John Gerlach/Visuals Unlimited; pp. 9, 11, 16 (center) © James H. Carmichael, Jr./Photo Researchers; pp. 15, 16 © Michael Durham/Minden Pictures.

Printed in China

09 10 11 12 13 14 15 16 RRD 8 7 6 5 4 3 2 1

# Plants That Eat Bugs

by Liz Ray

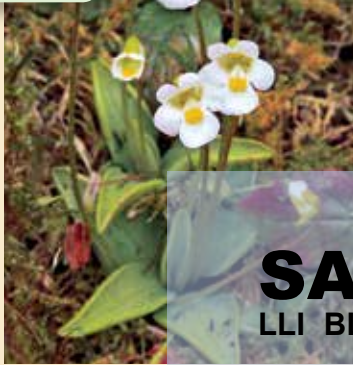
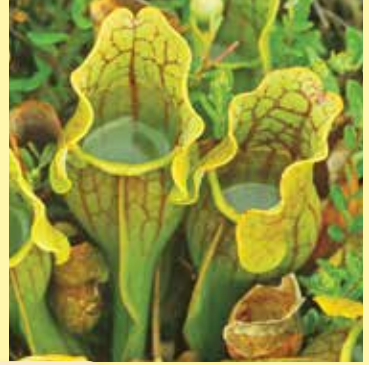


**SAMPLE**  
LLI BLUE SYSTEM BOOK

Some bugs eat plants.

The bugs eat the leaves.





**SAMPLE**  
LLI BLUE SYSTEM BOOK

Some plants eat bugs!

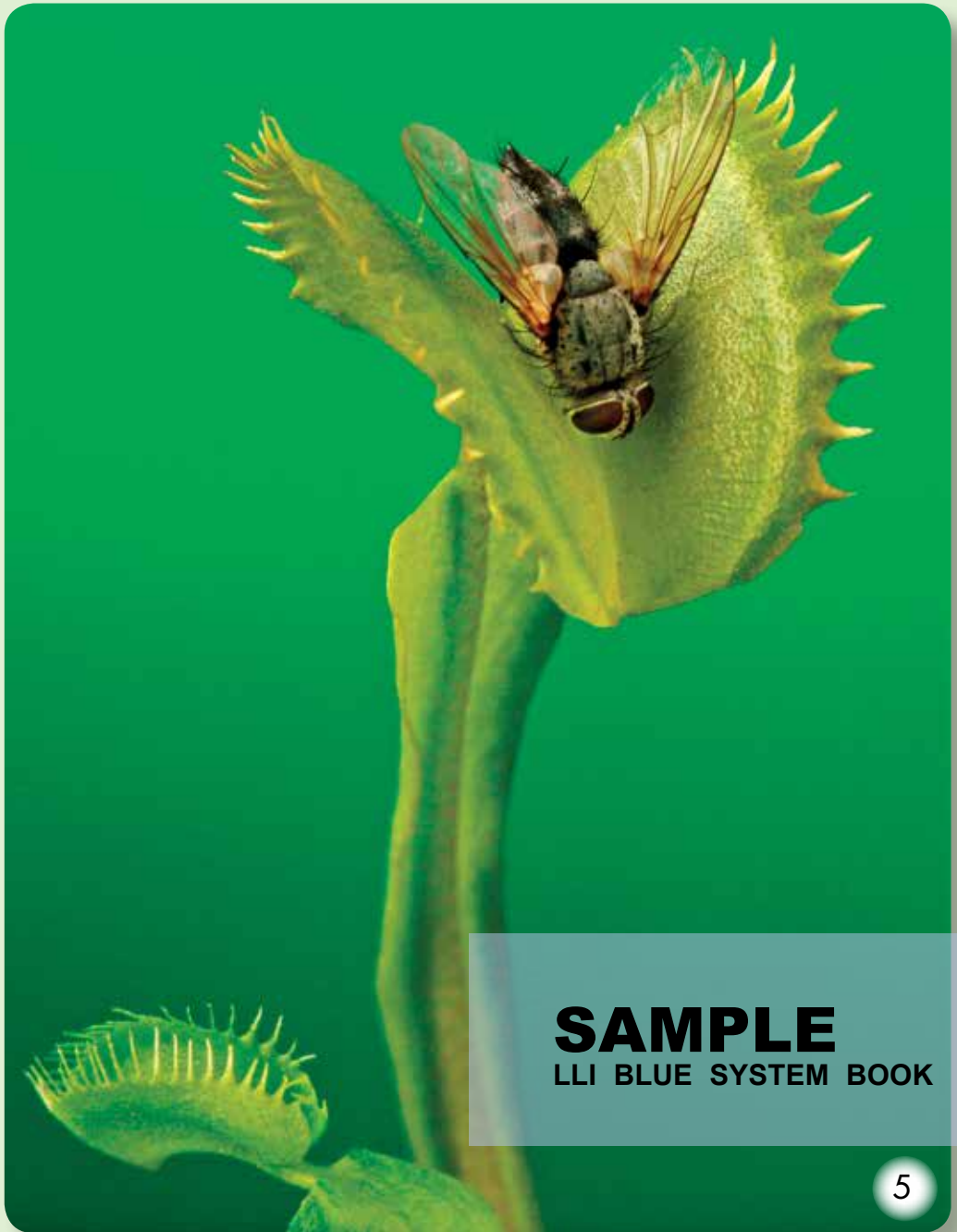
## Snap!

Look at the leaves  
on this plant.

They can trap bugs.

A bug lands on a leaf,  
and the leaf snaps shut.

Snap!



**SAMPLE**  
LLI BLUE SYSTEM BOOK

The leaf traps the bug.

The bug can not get out.

Then the plant can eat  
the bug.





**SAMPLE**  
LLI BLUE SYSTEM BOOK

## Stick!

The leaves on this plant  
are sticky.

A bug lands on a leaf,  
and the bug sticks to it.

Stick!



**SAMPLE**  
LLI BLUE SYSTEM BOOK

The leaf rolls up.

The leaf traps the bug.

The bug can not get out.

Then the plant can eat  
the bug.

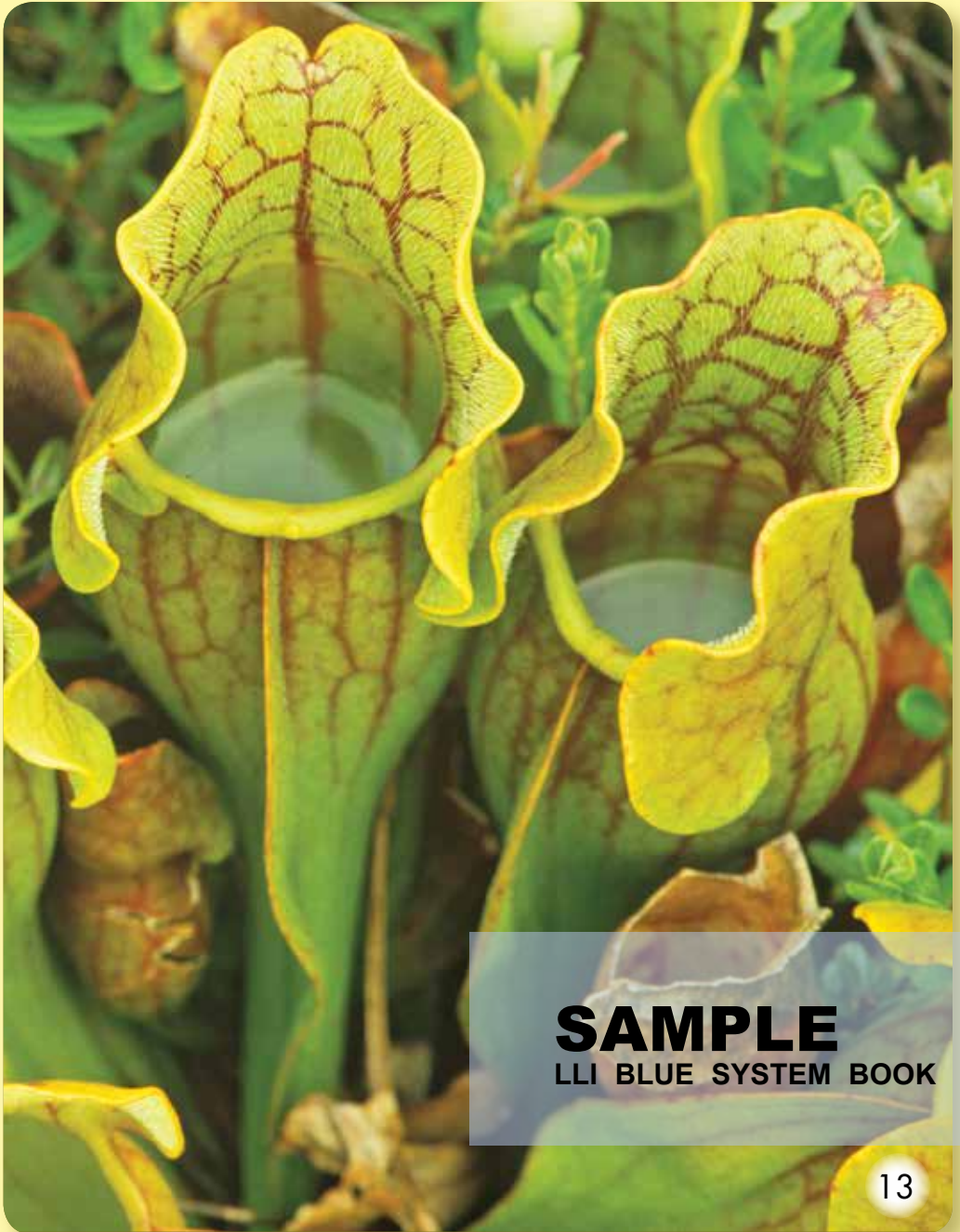


**SAMPLE**  
**LLI BLUE SYSTEM BOOK**

## Slide!

The leaves on this plant  
look like cups.

The cups are traps  
for bugs!



**SAMPLE**  
LLI BLUE SYSTEM BOOK

The cups have smooth sides.

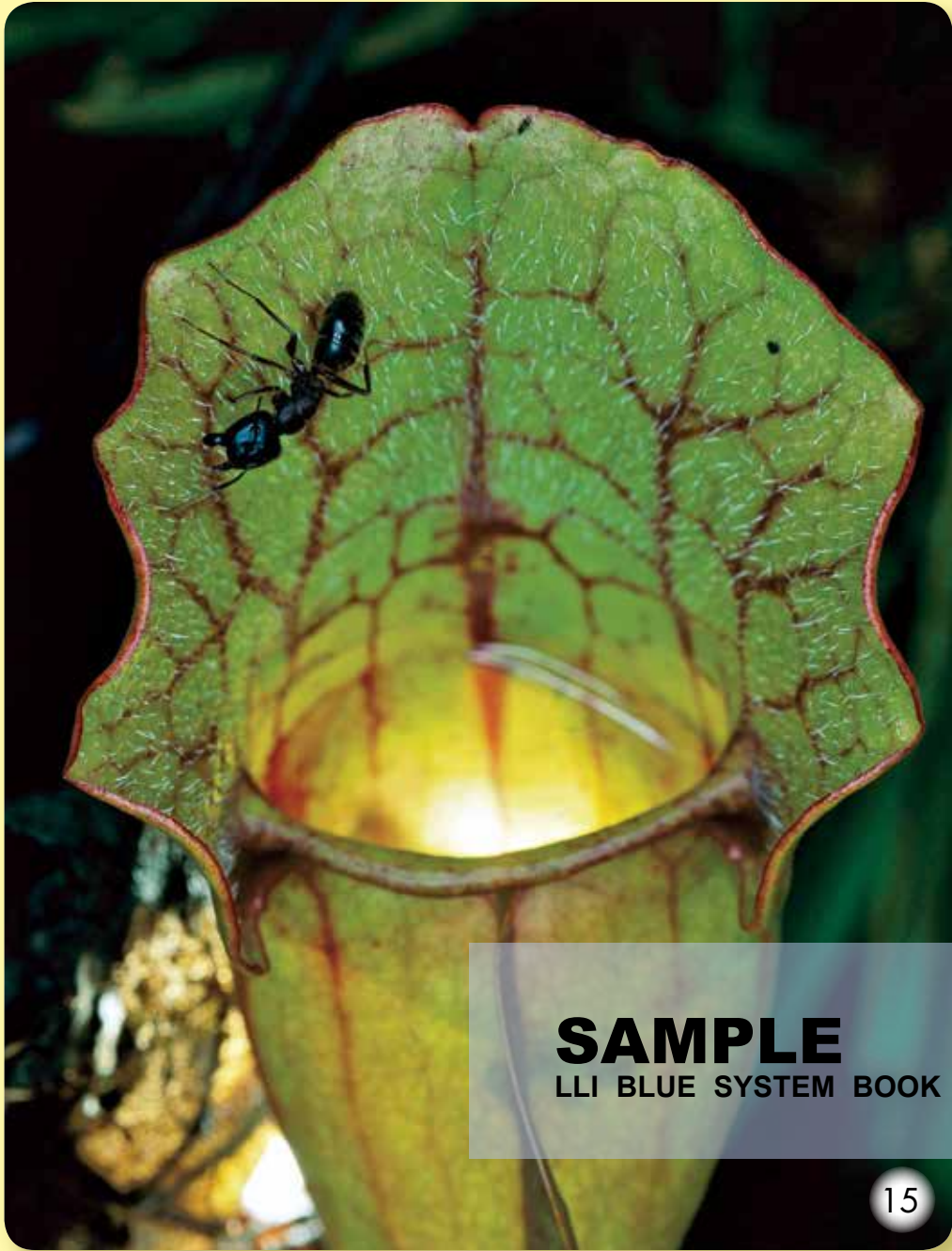
A bug lands in a cup,  
and it slides down.

Slide!

The plant traps the bug  
inside the cup.

Then the plant can eat  
the bug.





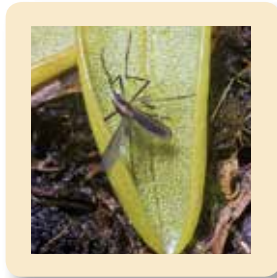
**SAMPLE**  
LLI BLUE SYSTEM BOOK

How do these plants  
get bugs?

Snap!



Stick!



Slide!





Fountas & Pinnell

Leveled Literacy Intervention



**Nonfiction**

Heinemann

[www.heinemann.com](http://www.heinemann.com)

Book 59

Level H

ISBN-13: 978-0-325-01656-6

ISBN-10: 0-325-01656-9



9780325016566

150 Total Running Words